

AutoComLink User Instructions

Start Page



F1 = Catalog

Vehicle Lookup Tab

Look up any part from 1962 – 2007 in this section

Catalog

Supplier: **Auto Electric Service Ltd**

Vehicle Lookup | Part Num Search | Desc Search | Category/Group | Parts | Labor

Select Year, Make, Model and Engine or select entry from previous vehicle list.

Year	Make	Model	Engine
2007	ACURA	C&K1500 PICKUP	V6-262 4.3L
2006	ACURA TRUCK	C&K2500 PICKUP	V8-305 5.0L
2005	AMC-EAGLE	C&K3500 PICKUP	V8-350 5.7L
2004	AMC-JEEP TRUCK	C3500HD	V8-400 6.5L Dsl
2003	AUDI	TAHOE	
2002	BMW	C&K1500 SUBURBAN	
2001	BUICK	C&K2500 SUBURBAN	
2000	CADILLAC	VENTURE	
1999	CHEVROLET	G1500 VAN	
1998	CHEVY TRUCK	G2500 VAN	
1997	CHRYSLER	G3500 VAN	
1996	CHRYSLER TRUCK	ASTRO VAN	
1995	DODGE	S10 PICKUP	
1994	DODGE TRUCK	BLAZER (S10)	
1993	FORD	P30 VAN	
1992	FORD TRUCK	USPS LONG LIFE VHCL	
1991	GEO		
1990	GEO TRUCK		

Previously Used Vehicles

- 1997 CHEVY TRUCK C&K1500 PICKUP V8-350 5.7L
- 1990 DODGE TRUCK CARAVAN MINI VAN V6-181 3.0L
- 2002 DODGE TRUCK RAM 1500 PICKUP V8-287 4.7L SOHC
- 1997 CHEVY TRUCK C&K1500 PICKUP V8-400 6.5L Dsl
- 1983 CHEVY TRUCK C+K 10,20,30 P/U V8-379 6.2L Dsl
- 1995 CHEVY TRUCK C&K1500 PICKUP V8-400 6.5L Dsl
- 1977 CHEVY TRUCK C+K 10,20,30 P/U V8-350 5.7L

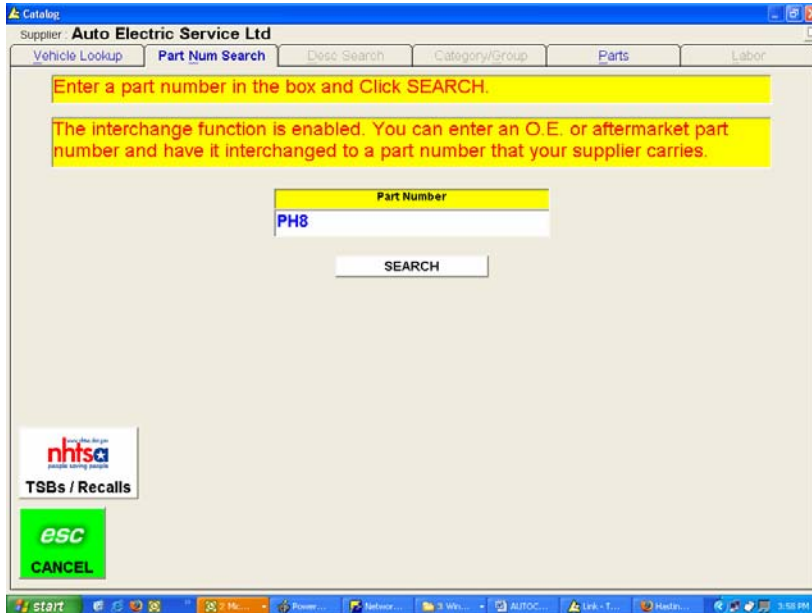
TSBs / Recalls

BSC
CANCEL

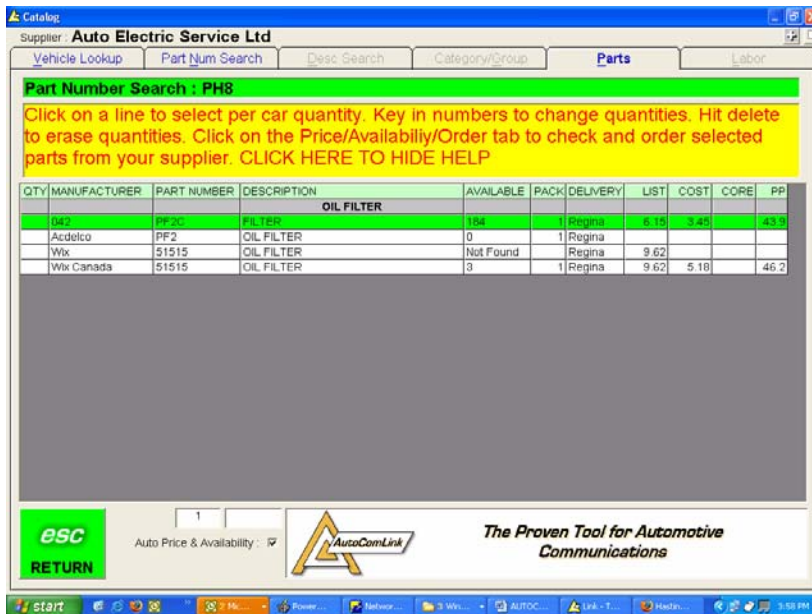
start | 2 Mic... | Power... | Networ... | 3 Win... | AUTOC... | AutoC... | Link - T... | 3:42 PM

Part Number Search Tab

Interchange or part number lookup (excellent page)

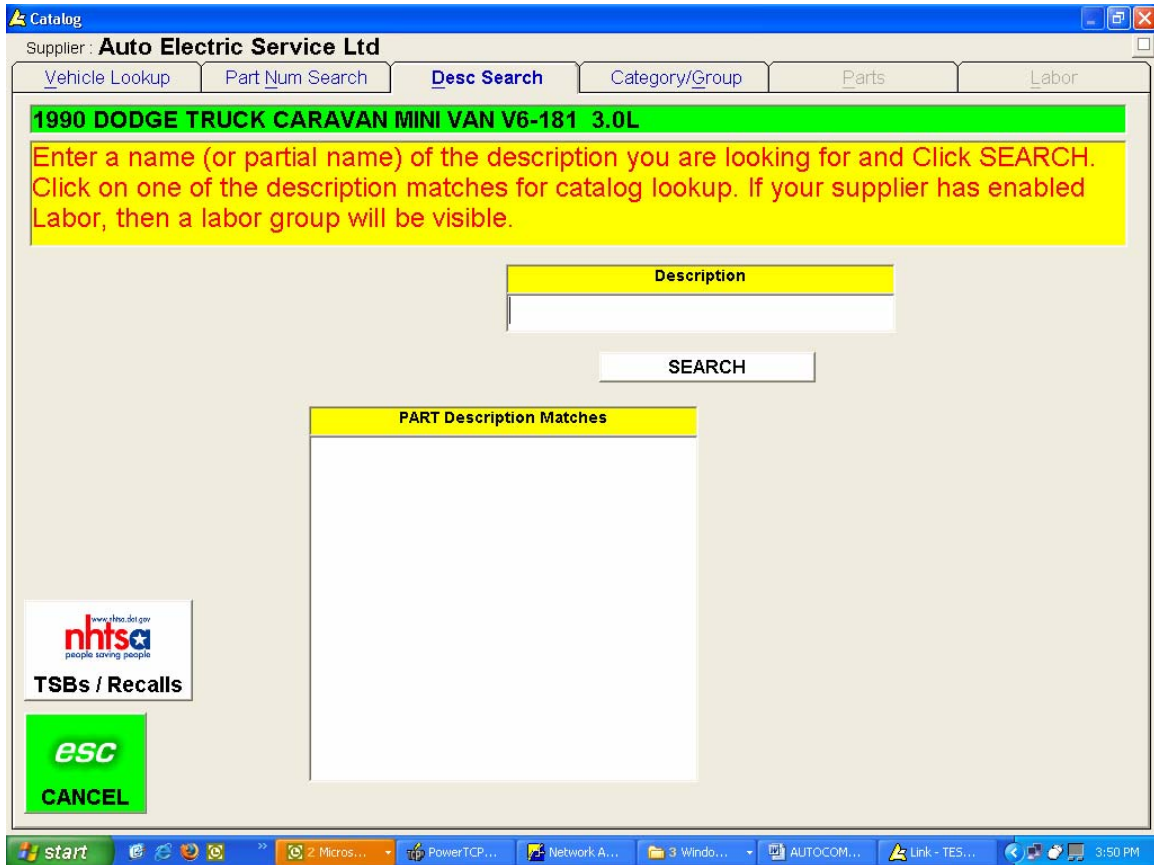


Results of search



Desc Search Tab

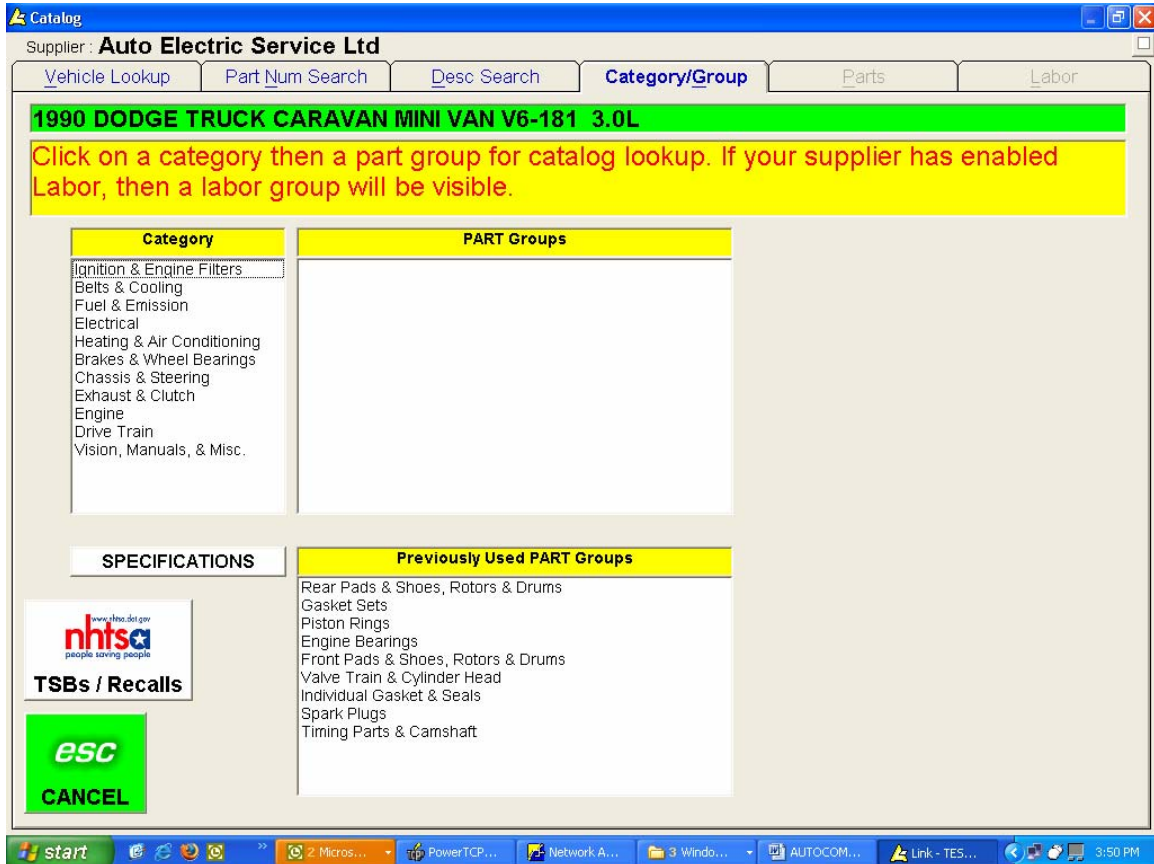
After the engine qualifier is chosen, you can *Desc Search* for parts that are hard to find or describe. (Ex. use keywords, Pigtailes, pumps, smog, camshaft etc...)



Category/Group Tab

Chose *Category*, *Parts Group*, parts will be displayed.

Special note: 1) check box on *Auto Price & Availability* for every time inventory and price checking. 2) *Specification* box gives you specs for fluid capacities, air tire pressures, and torques to break specs. for that application.



Parts Tab

Part numbers, inventories and prices will shown here.

Supplier: **Auto Electric Service Ltd**

Vehicle Lookup | Part Num Search | Desc Search | Category/Group | **Parts** | Labor

1997 CHEVY TRUCK C&K1500 PICKUP V8-350 5.7L

Click on a line to select per car quantity. Key in numbers to change quantities. Hit delete to erase quantities. Click on the Price/Availability/Order tab to check and order selected parts from your supplier. **CLICK HERE TO HIDE HELP**

QTY	MANUFACTURER	PART NUMBER	DESCRIPTION	AVAILABLE	PACK	DELIVERY	LIST	COST	CORE	PP
	Federal-Mogul	2555A50	Rod Bearing A-SERIES ALUMINUM BEARINGS EXCEPT DISPLAY STANDARD SIZES ONLY	0	1	Regina	8.71			
	Federal-Mogul	2555A60	Rod Bearing A-SERIES ALUMINUM BEARINGS EXCEPT DISPLAY STANDARD SIZES ONLY	0	1	Regina	8.71			
	Federal-Mogul	2555CA60	Rod Bearing UNPLATED & RESIZEABLE EXCEPT DISPLAY STANDARD SIZES	0	1	Regina	8.71			
	Federal-Mogul	2555CP	Rod Bearing	16	1	Regina	8.71			
	Federal-Mogul	2555CP1	Rod Bearing EXCEPT DISPLAY STANDARD SIZES ONLY	12	1	Regina	8.71			
	Federal-Mogul	2555CP10	Rod Bearing EXCEPT DISPLAY STANDARD SIZES ONLY	12	1	Regina	8.71			
	Federal-Mogul	2555CP2	Rod Bearing EXCEPT DISPLAY STANDARD SIZES ONLY	0	1	Regina	8.71			
	Federal-Mogul	2555CP20	Rod Bearing EXCEPT DISPLAY STANDARD SIZES ONLY	16	1	Regina	8.71			
	Federal-Mogul	2555CP30	Rod Bearing EXCEPT DISPLAY STANDARD SIZES ONLY	0	1	Regina	8.71			
	Federal-Mogul	2555CP40	Rod Bearing EXCEPT DISPLAY	0	1	Regina	8.71			

1 69-02

ESC
RETURN

Auto Price & Availability:

AutoComLink

The Proven Tool for Automotive Communications

Labor Tab

Labor guide will be sourced here if purchased

F2 = Add

Link Add Parts

Wildcard Searches (Ex. Parts we carry that can't be looked up in catalog. Oil, Paint, Specialty Items. Keep your booking program sheets; they have good common numbers in them.



(Note) you can also do a F1 = Interchange here

Same as *Part Number Search Folder* above (remember to click on white box to make interchange work)

Then check off number you want and click OK to check our inventory

Results of wildcard search

Link - TEST Auto Electric - Rick work

Supplier: Auto Electric Service Ltd

Price/Availability/Order Supplier Information Supplier Web Site

CLICK HERE TO SHOW HELP

QTY	MANUFACTURER	PART NUMBER	DESCRIPTION	AVAILABLE	PK	DELIVERY	LIST
1	ALT	CSA512	oil pan heater	25	1	Regina	148.63
1	IRT	913216	all weather seal	54	1	Regina	17.42
1	PMA	PM4L	4l antifrz	2915	1	Regina	14.99
1	PMA	PEAKEL	ext. life antifreeze	192	1	Regina	16.99
1	Q/S	3623	sae25w50 pennzoil gt	84	1	Regina	6.03
1	OTC	4044	pump, elec. "ram run	0	1	Regina	1850.63
0	NGK	4044	spark plug	10	1	Regina	4.85
0	Q/S	4044	sae20w50 pennzoil gt	4	1	Regina	5.60
1	Q/S	29042	sae10w30hd	676	1	Regina	5.38
0	Q/S	2011	sae10w30 pennzoil	46	1	Regina	5.30
1	DAY	15215	v-belt	2	1	Regina	17.64
1	REC	15-215	4l wwaf -35c	1036	1	Regina	3.59
1	ROT	RT6765	rod connecting kohl	0	1	Regina	55.10
0	STE	510339	connecting rod	1	1	Regina	63.89

F1 Catalog F2 Add F3 Change F4 Delete F5 Delete All F6 Info F7 Last Cat F8 Check F9 Order

AutoComLink AUTO electric service Home Pay Online Contact Us Head Office History Line Card Online Quote Order Online PRINT COPY

start 2 Mic... PowerT... Network... 3 Wind... AUTOC... Link - TE... Hastings... 4:06 PM

F3 = Change

Allows changes of quantities on highlighted parts on *Price/Availability/Order* tab

F4 = Delete

Deletes highlighted lines on *Price/Availability/Order* tab

F5 = Delete All

Deletes all highlighted lines on *Price/Availability/Order* tab

F6 = Info

Gives information, manufacturer, list price, application, years, core value etc... on highlighted part on *Price/Availability/Order* tab

F7 = Last Cat

Takes you to last vehicle you looked up

F8 = Check

Click to update and check your parts listed on *Price/Availability/Order* tab

F9 = Order

Prior to F9, Delete the parts you don't want on the *Price/Availability/Order* tab. Then press F9 and fill in the blank and PO's. Click OK to order.

The screenshot shows a software window titled "Link - TEST Auto Electric - Rick work". The "Supplier" is set to "Auto Electric Service Ltd". The interface has three tabs: "Price/Availability/Order" (selected), "Supplier Information", and "Supplier Web Site". A yellow banner at the top of the table area says "CLICK HERE TO SHOW HELP".

QTY	MANUFACTURER	PART NUMBER	DESCRIPTION	AVAILABLE	PK	DELIVERY	LIST
1	IRT	913216	all weather seal	54	1	Regina	17.42
1	PMA	PEAKEL	ext.life antifreeze	192	1	Regina	16.99
3	S/P	CS274	camshaft		1		145.83
0	S/P	CS1103R	camshaft	1	1	Regina	311.99
0	S/P	CS1014R	camshaft	3	1	Regina	260.81
1	***	MS98001T		Not Found		Regina	
1	SNT	12215	9pc 3/8 deep sae soc	0	1	Regina	42.72

Below the table is a row of function keys: F1 (Catalog), F2 (Add), F3 (Change), F4 (Delete), F5 (Delete All), F6 (Info), F7 (Last Cat), F8 (Check), and F9 (Order). At the bottom, there is a navigation bar with buttons for Home, Pay Online, Contact Us, Head Office, History, Line Card, Online Quote, and Order Online, along with PRINT and COPY buttons.

Ordering

- 1) Make sure quantities are correct
- 2) Make sure your aware of branch location (Regina 1, Yorkton 2, Estevan 3, Weyburn 4, Mainline 5)
- 3) Fill in your own PO or leave as is
- 4) Fill in any shipping instructions under the 3 MEMO lines available (DHL, Bus, In Bucket, give us your courier account, etc.....)
- 5) Easy!!!!!!!

Supplier: Auto Electric Service Ltd

Branch: Auto Electric Service Ltd Main Location

You are about to send a purchase order to your supplier for the 5 parts listed. PO number is a required field. Click OK to send or NO to cancel.

QTY	MANUFACTURER	PART NUMBER
1	IRT	913216
1	PMA	PEAKEL
3	S/P	CS274
1	***	MS98001T
1	SNT	12215

PO Number: 67 MUSTANG

Memo: Ship loomis prepaid and charge

Ship to:

Address:

Address:

City / St / Zip:

Attn:

Phone:

Country:

Ship Method:

Ship Code: 0

Pay Code: 0 Default Form of Payment

OK NO F9 Order

PRINT COPY

AutoComLink

Home Pay Online Contact Us Head Office

History Line Card Online Quote Order Online

If you need any online Tech,
 click on AutoComLink and follow instructions.
 They will answer as soon as possible.

Other features

TSB/Recalls: Find bulletins, recalls and consumer complaints on specific applications

Toggle Cost: Plus (+) sign top right corner to hide cost from customers



How to order parts through cataloguing (**F1**)

When you get into cataloguing, make sure the "**auto check availability**" box is checked off on the bottom left.

Order parts through (**F2**) (add) when you know the number. Examples (auto parts, oil, chemicals, anti-freeze, anything in the warehouse) can be entered.

The Interchange feature (to change from a competitor number).

3rd top tab (our website) print off our line card for future reference

The order screen. (F9) If you use Po's, you can override the PO # with your own number, or put some other info in there that would help you track the order (I suggest customer plate # or name).

No need to fill anything out on the order screen, EXCEPT FOR THE MEMO FIELD. In that field you should put how you want the order (i.e. for us to deliver, rush delivery, pick-up at front counter, pick up at back counter, LOOMIS, bus, via branch, etc.).

Click on the bottom left corner of the screen on the Autocomlink logo, you can get to their website and then click on "contact" if you have any problems with the program.

For comfort, try your first couple orders and call us 1-800-552-8746. We can check it right away to make sure it's printed. The orders print at the warehouse within seconds.

That's it. Have a nice Day!

To get serial number you must have valid account with Auto Electric Service

Rick Shaw/Brenda Gelowitz

1-800-552-8746